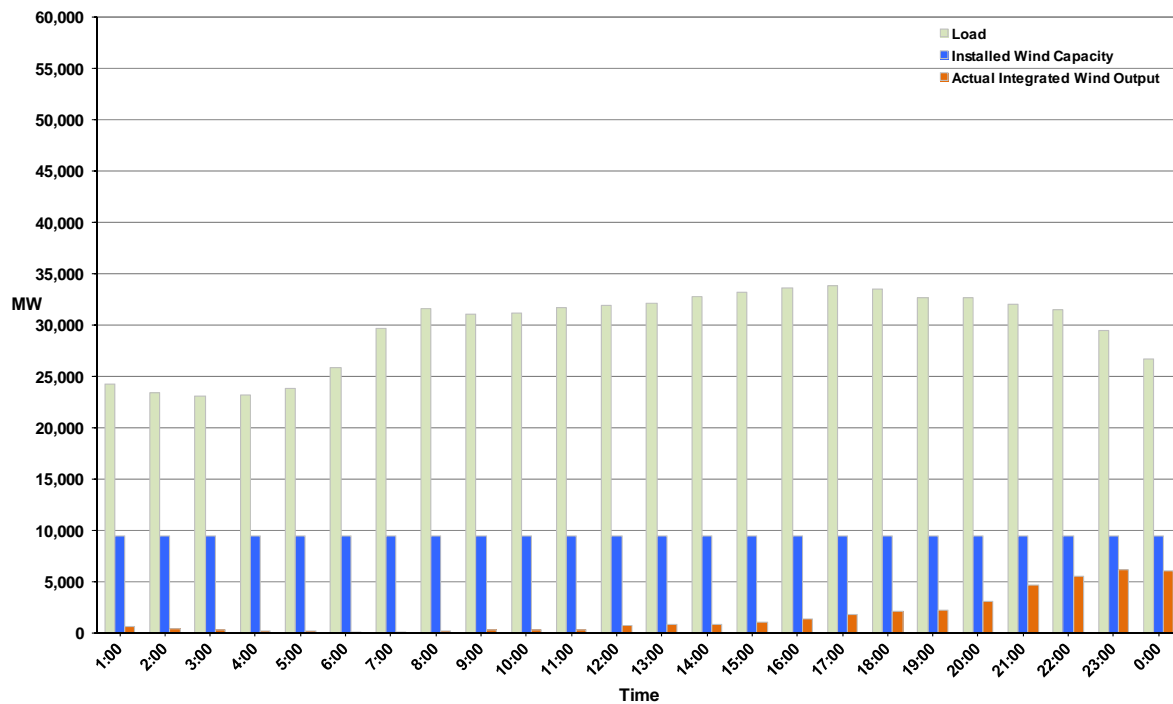




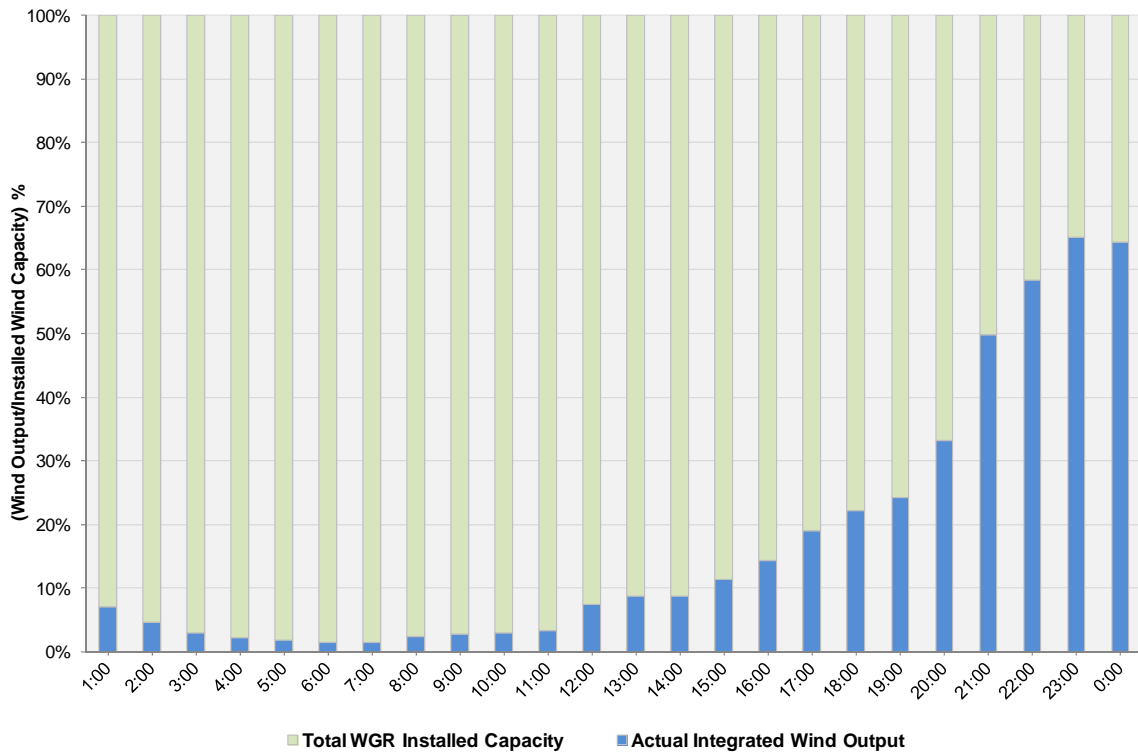
ERCOT Grid Operations Wind Integration Report: 10/31/11

Peak Load	33,860 MW
Load Peak Hour	17
Wind over Peak	1,797 MW
Wind Record 10/07/11	7,400 MW
Max Wind Value	6,265 MW
Wind Peak Time	22:45
Wind Integration %	21.87%

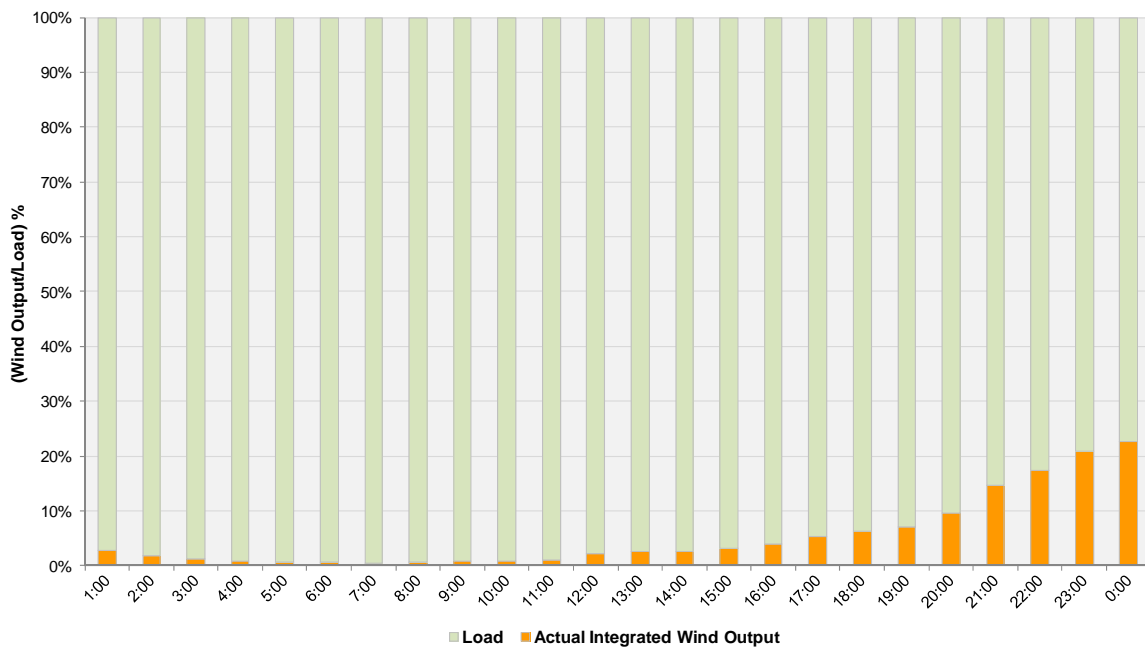
**Hourly Average Actual Load vs. Actual Wind Output
10-31-2011**



Actual Wind Output as a Percentage of the Total Installed Wind Capacity
10-31-2011



Actual Wind Output as a Percentage of the ERCOT Load
10-31-2011



ERCOT Load vs. Actual Wind Output 10/24/2011 - 10/31/2011

